

ZH127 Series connector

• Main performance indicators

Working temperature: -60°C~+85°C;

Working voltage: 250V;

Contact resistance: ≤5mΩ;

Insulation resistance: ≥1000MΩ (under normal conditions);

Vibration: 1-5000Hz 20g;

Impact: 1000g once, 100g multiple times;

Shell material: aluminum alloy;

Shell plating: nickel plated;

Mechanical life: 250 plug and unplug times;

Working hours: 5000 hours.

Marking description

ZH127	1(2)	4/10	B(P)	1(3,4)	1(2,3)	B
Basic series						
1 silver, 2 gold						
Number of contacts / Shell number						
B - receptacle (with pin) BL - receptacle (with PCB pin) P - plug (with socket)						
1 - Receptacle without tail attached 3 - Plug with straight tail and sleeve attached 4 - Plug with straight tail attached						
Polarization						
All-climatic version						

Main product information

№	Name	Model / Partnumber	Termination method	Contact diameter	Contact plating
1	Plug	ZH127-1-10/14-P3-1-B	Welding	Ø 1.0mm	Silver
2	Receptacle	ZH127-1-10/14-B1-1-B	Welding	Ø 1.0mm	Silver
3	Plug	ZH127-1-19/18-P3-1-B	Welding	Ø 1.0mm	Silver
4	Plug	ZH127-1-19/18-P3-2-B	Welding	Ø 1.0mm	Silver
5	Plug	ZH127-1-19/12-P4-1-B	Welding	Ø 0.6mm	Silver
6	Plug	ZH127-2-10/10-P3-1-B	Welding	Ø 0.6mm	Gold
7	Plug	ZH127-2-30/14-P3-1-B	Welding	Ø 0.6mm	Gold
8	Plug	ZH127-2-30/14-P3-2-B	Welding	Ø 0.6mm	Gold
9	Plug	ZH127-2-4/10-P3-1-B	Welding	Ø 1.0mm	Gold
10	Receptacle	ZH127-2-32/22-BL1-1-B	Printed board soldering	Ø 1.0mm	Gold
11	Receptacle	ZH127-2-50/18-BL1-1-B	Printed board soldering	Ø 0.6mm	Gold
12	Plug	ZH127-2-32/22-P4-1-B	Welding	Ø 1.0mm	Gold
13	Plug	ZH127-2-50/18-P4-1-B	Welding	Ø 0.6mm	Gold

- **Overall dimensions**

- The overall dimensions of the ZH127-1-10/14-B1-1-B receptacle product are shown in Figure 1.

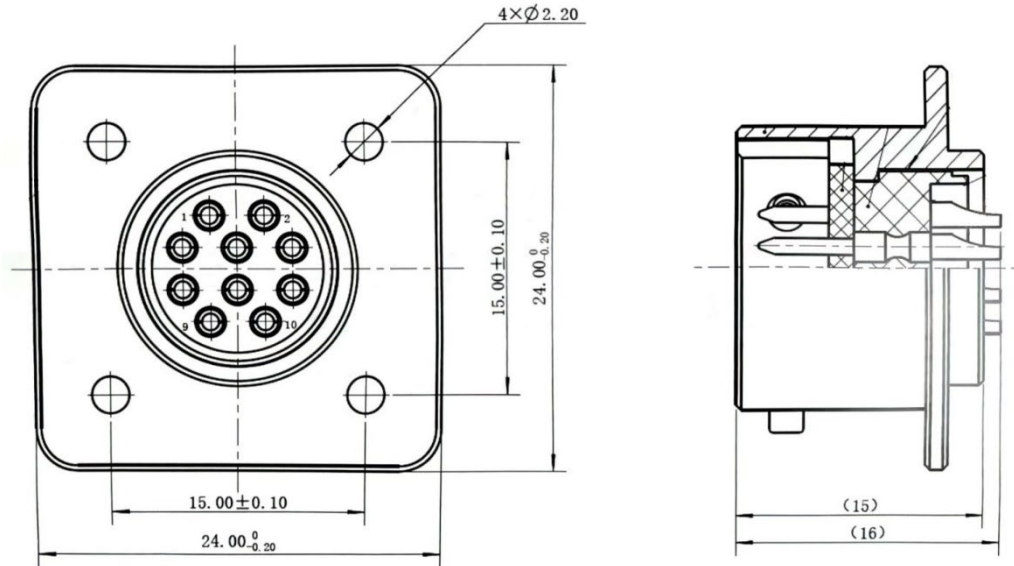


Figure 1. ZH127-1-10/14-B1-1-B receptacle product dimensions drawing

- The overall dimensions of ZH127 series plugs with P3 tail attachment are shown in the table below Figure 2. The hole group arrangement shown in Figure 2 takes ZH127-1-10/14-P3-1-B as an example.

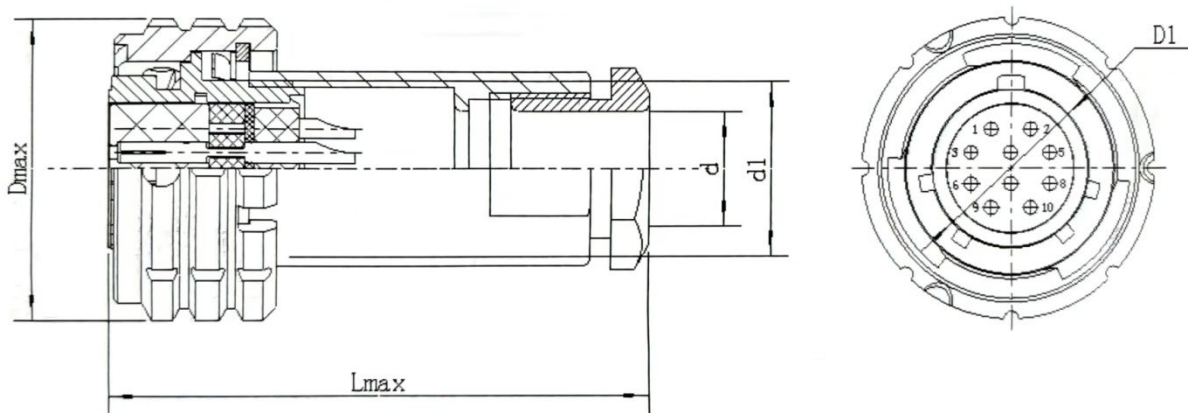


Figure 2. The hole group arrangement for ZH127-1-10/14-P3-1-B is shown as an example

Dimensional drawing of product with plug with P3 tail attachment

Model / Partnumber	Dmax	d	d1	D1	Lmax
ZH127-1-10/14-P3-1-B	24	9	M14×0.75	12.8	45
ZH127-1-19/18-P3-1-B	27	11	M18×0.75	16	47
ZH127-1-19/18-P3-2-B	27	11	M18×0.75	16	47
ZH127-2-10/10-P3-1-B	20	6	M10×0.75	9.3	40
ZH127-2-30/14-P3-1-B	24	9	M14×0.75	12.8	45
ZH127-2-30/14-P3-2-B	24	9	M14×0.75	12.8	45
ZH127-2-4/10-P3-1-B	20	6	M10×0.75	9.3	40

- The overall dimensions of ZH127 series plugs with P4 tail attachment are shown in the table below Figure 3.
The hole group arrangement shown in Figure 3 takes ZH127-2-32/22-P4-1-B as an example.

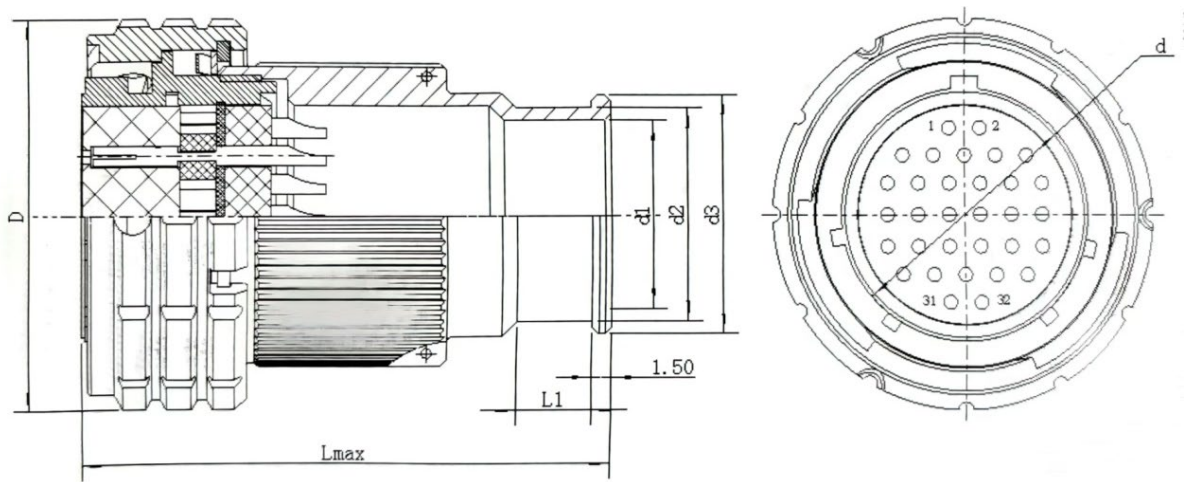


Figure 3. The hole group arrangement for ZH127-2-32/22-P4-1-B is shown as an example

Dimensional drawing of product with plug with P4 tail attachment

Model / Partnumber	D	d	d1	d2	d3	L1	Lmax
ZH127-1-19/12-P4-1-B	21	10.8	9	11	13	8	33
ZH127-2-32/22-P4-1-B	31	20	15	17	19	6	42
ZH127-2-50/18-P4-1-B	27	16	13	15	17	6	41

- The overall dimensions of the ZH127-2-32/22-BL1-1-B receptacle product are shown in Figure 4.

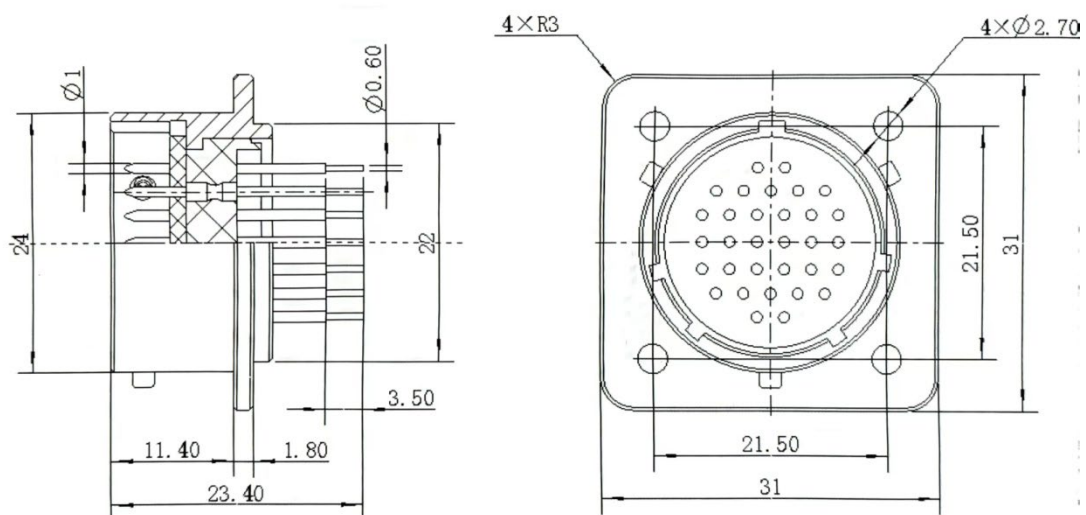


Figure 4. ZH127-2-32/22-BL1-1-B receptacle product dimensions drawing

- The overall dimensions of the ZH127-2-50/18-BL1-1-B receptacle product are shown in Figure 5.

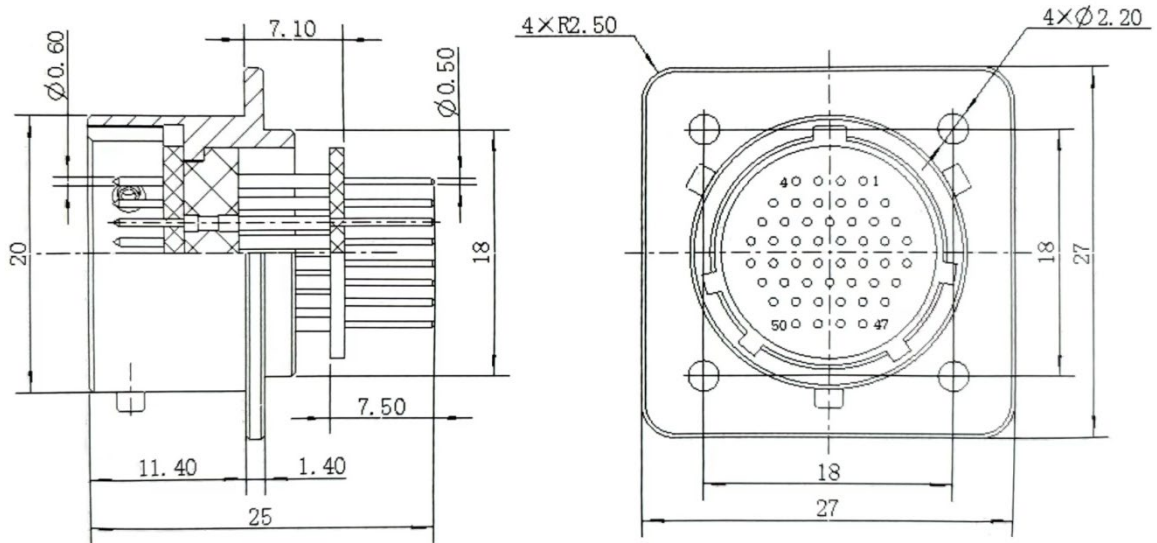


Figure 5. ZH127-2-50/18-BL1-1-B receptacle product dimensions drawing

• Hole group arrangement

The arrangement of hole groups 4/10, 10/14, 19/18 and 32/22 is shown in Figure 6.

The diameter of the contact body is $\varnothing 1.0\text{mm}$.

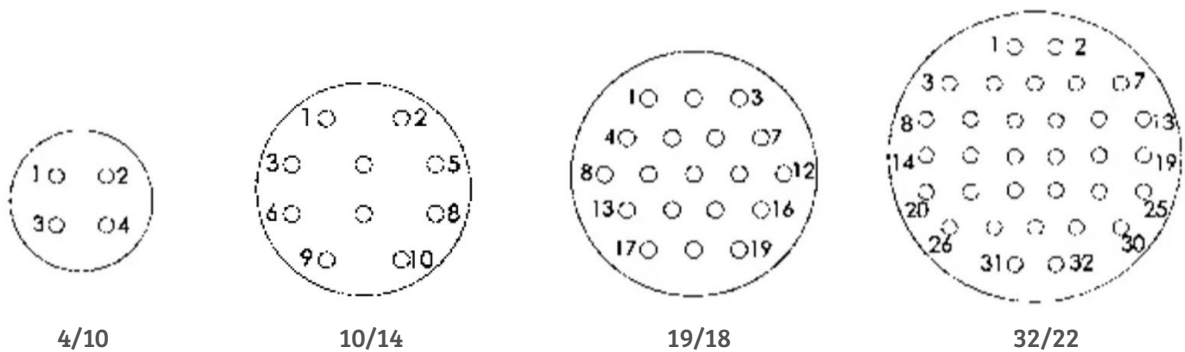


Figure 6. $\varnothing 1.0\text{mm}$ hole group arrangement diagram

The arrangement of hole groups 10/10, 19/12, 30/14 and 50/18 is shown in Figure 7.

The diameter of the contact body is $\varnothing 0.6\text{mm}$.

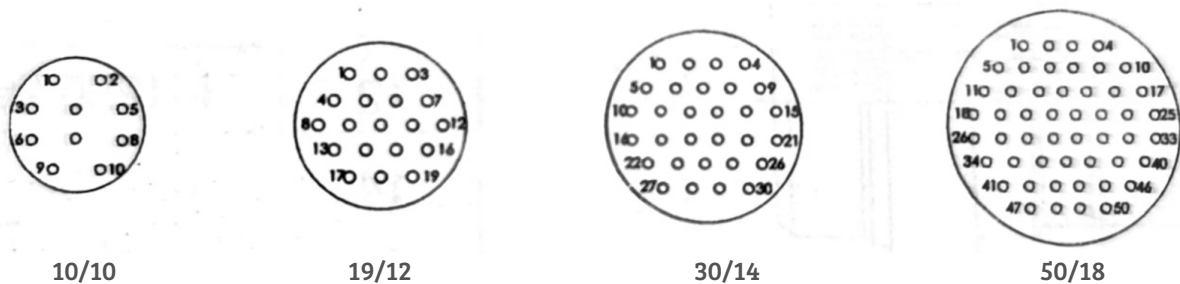


Figure 7. $\varnothing 0.6\text{mm}$ hole group arrangement diagram



See Figure 8 for the schematic diagram of key 1 of products with shell numbers 10 and 12. The model numbers are ZH127-1-19/12-P4-1-B, ZH127-2-10/10-P3-1-B, ZH127-2-4/10-P3-1-B.

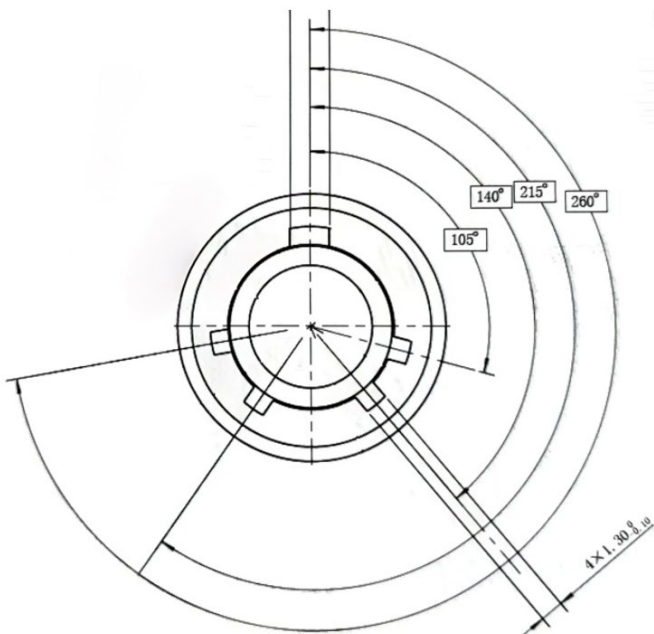


Figure 8. Key diagram 1

The schematic diagram of key position 1 and key position 2 for products with shell numbers 14, 18 and 22 is shown in Figure 9.

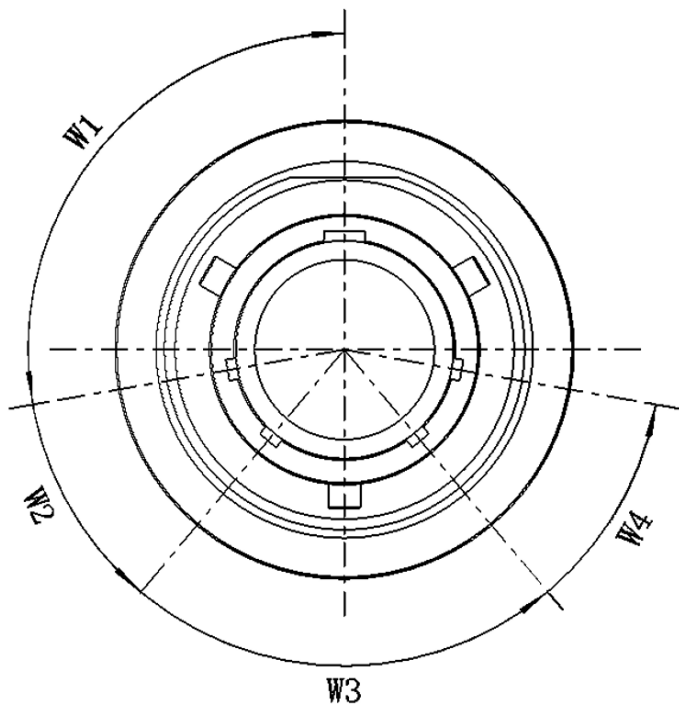


Figure 9. Key diagram

Product key	W1	W2	W3	W4
1	90°	135°	205°	260°
2	105°	140°	215°	260°

Note: The illustration takes 2 key positions as an example.